



**FRSA**  
Fire Rescue Safety Australia

**SPENCER**  
Made for Decisive Moments

# PRODUCT DATA SHEET

## Spencer 4BELL STAIR+

### DESCRIPTION

4BELL STAIR+ is an EMS foldable transport chair designed to transfer or evacuate patients with mobility limitations from multi-storey buildings. Its two tracks make the chair suitable for a controlled stairway descent. Lifting the chair may not be required.

It is built in accordance to the specifications set by UNI EN 1865-4 and is compliant with UNI EN 1789 when anchored to its dedicated fixation system 4BELL Stair+ Max.

The frame of the chair is made in aluminium for increased resistance. Its total weight is 14,7 kg (32.4 lb).

180 kg - 397 lb



Load Capacity



Stair Tracks



Multi-height Extension  
Handle



Foldable Chair

### FEATURES

- **Frame in aluminium** makes the chair lightweight and resistant at the same time
- **Two reinforced tracks** help going down stairs in a safe and controlled way
- **An extendable handhold** on the back offer greater control when sliding the chair down stairs
- **Two telescopic handles at the front and two foldable ones behind the backrest** help operators to lift the chair in case of obstacles
- **Rear wheels' locking mechanism** makes sure the chair does not slide on a flat surface
- **Semirigid seat and soft backrest** are built to increase patient comfort
- **Foldable footrest** increases patient stability
- **Easy to clean PVC seat and backrest** are resistant to chemicals
- **Pivoting front wheels** makes the chair more maneuverable



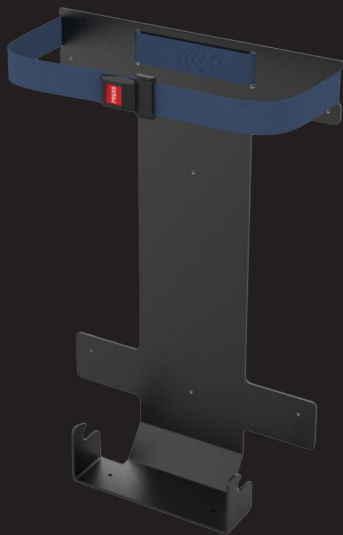
## TECHNICAL DATA

Length with handles retracted / extracted	76 / 112 cm - 29.9 / 44 in
Length with tracks and telescopic handles extracted	128 cm - 50.3 in
Width	49 cm - 19.2 in
Height	94 cm - 37 in
Height with extendable handle extracted	147,5 cm - 58.07 in
Dimensions when folded	49 x 94 x 29 cm - 19.3 x 37 x 11.4 in
Weight	14,7 kg - 32.4 lb
Load capacity	180 kg - 397 lb
Front wheels	ø 10 cm - 3.93 in
Rear wheels	ø 15 cm - 5.9 in
Materials	Al, Steel, PU, PVC

## PRODUCT INCLUDES

Restraint belts.

## ACCESSORIES



4BELL STAIR+ MAX

10G tested fastening system

It is installed in ambulance, special vehicles or airplanes  
It helps securing the 4BELL STAIR+ in foldable  
position to either the wall or the floor.



ST10452 Seat XL

ST10450 Armrests

ST10451 Rear auxiliary handles

ST10454 Headrest 4Bell STAIR+